

P1 Orientation

20 November 2023



A Gracious Community of Confident and Innovative Life-long Learners
Igniting the Joy of Learning, Inspiring all to Care and Share



Agenda

- **Information on First 2 Days of School**
- **Preparing Your Child For P1**



First 2 Days of School

2nd and 3rd January 2024

	Reporting Time Enter Via Main Gate Only	Dismissal Time Exit Via Side/Back gate Only
2nd January, Tuesday	8.30 a.m. Main Gate	12.30 p.m. Side/Back Gate
3rd January, Wednesday	8.30 a.m. Main Gate	12.30 p.m. Side/Back Gate

**Please note: The school car park is strictly for staff use.
Unauthorised vehicles will NOT be allowed to park in the school premises.**



*A Gracious Community of Confident and Innovative Life-long Learners
Igniting the Joy of Learning, Inspiring all to Care and Share*



***Day 1 and *Day 2 of school
Enter Via Main Gate**



A Gracious Community of Confident and Innovative Life-long Learners
Igniting the Joy of Learning, Inspiring all to Care and Share



Front / Main Gate



All P1 students will enter by only the main gate for the first 2 days of school.

Thereafter, any of the school gates can be used for entering the school.



P1 Dismissal Points (Gates)



A Gracious Community of Confident and Innovative Life-long Learners
Igniting the Joy of Learning, Inspiring all to Care and Share



Side Gate (beside Block 455)



A Gracious Community of Confident and Innovative Life-long Learners
Igniting the Joy of Learning, Inspiring all to Care and Share



Back Gate (beside Block 446)



A Gracious Community of Confident and Innovative Life-long Learners
Igniting the Joy of Learning, Inspiring all to Care and Share



Foyer (Drive Through)



Pick-up & drop off area for students travelling by car or other vehicles

Front Gate Opening hours for pick-up/drop off:

Before school: 7am-7.30am After school: 1.45 p.m. - 2.15 p.m.




A Gracious Community of Confident and Innovative Life-long Learners
Igniting the Joy of Learning, Inspiring all to Care and Share



Mode Of Dismissal

To facilitate your child's dismissal arrangement, please complete the daily **Mode of Dismissal Form** for your child in Parents Gateway by **Friday, 15 Dec 2023.**

E.g.

	NAME OF CHILD
	CLASS OF CHILD
Mode of Transport After School	
By Foot:	By Vehicle:
<input type="checkbox"/> Side Gate (beside Blk 455)	<input type="checkbox"/> Own transport
<input type="checkbox"/> Back Gate (beside Blk 446)	<input type="checkbox"/> School Bus
<input type="checkbox"/> Student Care:	

Mode of dismissal:

- Side gate
- Back gate
- By car*
- By school bus
- Student care

Students with siblings in PPS will wait at side gate /back gate

*By Vehicles: Pick-up at Front Foyer. Opening hours: 1.45pm-2.15pm



Programme



A Gracious Community of Confident and Innovative Life-long Learners
Igniting the Joy of Learning, Inspiring all to Care and Share



DAY 1

2nd January 2024

Time	Programme	
8.30 am	P1 & Parents Assemble In The School Hall *Pledge Taking and National Anthem	
8.35 a.m.	Welcome Speech by SL	
8.45 a.m.	Students' Programme	Parents' Programme
	Sport Games for Students 30 min	Parent-Teacher Meeting(PTM) 45 min
9.15 a.m.	P1 Recess – All Classes 45 min	Parents may proceed to the canteen to observe your child after PTM.
10.00 a.m.	Class Activity: "Get To Know You"	<u>Seminar for Parents (Optional)</u> Positive Parenting Programme 2.5 h
12.30 p.m.	P1 School Dismissal* *Side Gate/Back Gate	



THEMATIC ONLINE POSITIVE PARENTING PROGRAM

TRANSITION TO PRIMARY SCHOOL

PUNGGOL PRIMARY SCHOOL

Starting Primary school is an exciting milestone in a child's development. It opens up opportunities to forge new friendships, learning and growth.



On the other hand, the child has to face increased academic demands, adjust to a new environment, and exercise a greater degree of independence. How can parents best support them and set them up for success?

– FULLY SUBSIDISED –



A Gracious Community of Confident and Innovative Life-long Learners
Igniting the Joy of Learning, Inspiring all to Care and Share



SEMINAR DETAILS:

Certified Family Life
Educator (CFLE)

SEMINAR 1: THE POWER OF POSITIVE PARENTING & RAISING CONFIDENT, COMPETENT CHILDREN

2nd January 2024, Tuesday, 10am to 12.30pm

SEMINAR 2: RAISING RESILIENT CHILDREN

27 January 2024, Saturday, 9am to 11am
(Zoom Session)

Closing date for registration is
26 December 2023, Tuesday
(Limited slots only, on first come first served basis)



A Gracious Community of Confident and Innovative Life-long Learners
Igniting the Joy of Learning, Inspiring all to Care and Share



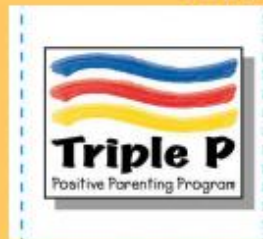
To register, visit the website or scan the QR code

<https://go.gov.sg/mws-north-2024-ptr4>

Presented by:



Supported by:



For more information on Triple P, please visit: <https://www.triplep-parenting.net/global/triple-p/>

MWS is an MSF-appointed Social Service Agency conducting secular parenting programmes



A Gracious Community of Confident and Innovative Life-long Learners
Igniting the Joy of Learning, Inspiring all to Care and Share



Day 2 3rd January 2024



Time	Programme
8.30 am	Getting Ready In The Classroom
9.30 am - 10.15am	School Tour by P4 Buddy
10.15 am -10.45am	P1 RECESS
10.45am - 12.30pm	Orientation Programme
12.30pm	P1 School Dismissal* *Side Gate/Back Gate/School Bus/Others



What to Bring to School?

Day 1 and Day 2

- Stationery
- A file or a folder
- Water bottle, healthy snacks, pocket money or packed food for recess



Additional items:

- Workbooks/files for collection as stated in P1 Orientation Booklet



Daily School Hours



A Gracious Community of Confident and Innovative Life-long Learners
Igniting the Joy of Learning, Inspiring all to Care and Share



Programme	Time	Venue
Silent Reading	7.10 a.m. - 7.30 a.m.	Hall / Classroom
Flag Raising	<u>7.30 a.m.</u> - 7.45 a.m.	Hall / Classroom
P1 Recess	10.15 a.m. - 10.45 a.m.	Canteen
Dry Snack Break	8.30 a.m. (10 minutes)	Classroom
Dismissal Time	1.30 p.m.	Side gate Back gate School Student Care or Foyer for vehicle pick-up
General Office Hours	Monday-Thursday: 7 a.m. – 5.30 p.m. Friday : 7 a.m. – 5.00 p.m.	



Preparing Your Child for P1



A Gracious Community of Confident and Innovative Life-long Learners
Igniting the Joy of Learning, Inspiring all to Care and Share



TRANSITION TO PRIMARY 1

Transition is the process in which a child moves into a new environment

- For example, when a child moves from preschool to primary school, a child has to adapt to an unfamiliar setting

A smooth transition occurs when your child:

- feels safe and comfortable in their new environment
- is able to manage the daily challenges of school life
- can reach out to teacher and/or peers for support when needed



TRANSITION TO PRIMARY 1

When your child enters primary school, their experience will include:



HOW CAN I PREPARE MY CHILD FOR PRIMARY 1?

In primary school, your child will be equipped with skills to:

- adjust to a larger learning environment
- interact with more peers and teachers
- adapt to longer school hours
- become **more** independent and responsible



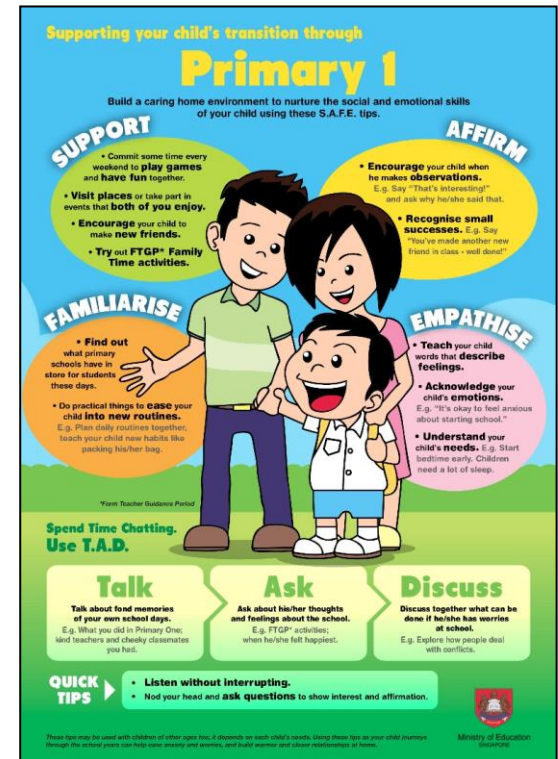
How Can I Support My Child During This Transition?

Support your child and encourage them to overcome challenges with you

Affirm your child by recognising small successes and praising their efforts

Familiarise your child by easing them into new routines and sharing with them your experiences in primary school

Empathise and acknowledge your child's feelings



WHAT DOES MY CHILD NEED AT PRIMARY 1?

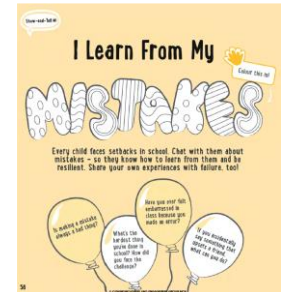
Every child develops at a different pace. We will continue nurturing the knowledge, skills and dispositions that your child has developed at preschool:

Values, Social-Emotional Competencies, Citizenship Dispositions	<ul style="list-style-type: none"> • Understand and Care for Oneself • Show Care and Respect for Others • Make Responsible Decisions and Act on Them
Art	<ul style="list-style-type: none"> • Enjoy Participating in Art • Express Ideas and Feelings through Art • Demonstrate Awareness of Art from Different Cultural Groups
English Language	<ul style="list-style-type: none"> • Listen and Speak for Enjoyment and Information • Read with Enjoyment and Understanding • Communicate Ideas and Information through Writing or Using Symbols or Letter-Like Shapes
Mathematics	<ul style="list-style-type: none"> • Basic Understanding of Numbers Up To 10 • Recognise Simple Patterns • Compare Quantities Between Two Groups of Objects
Mother Tongue Languages	<ul style="list-style-type: none"> • Enjoy and Show an Interest in Learning Mother Tongue Language. • Enjoy and Show an Interest in Listening and Speaking in Mother Tongue Language. • Demonstrate Awareness of Local Ethnic Culture
Music	<ul style="list-style-type: none"> • Enjoy Participating in Music and Movement Activities • Express Ideas and Feelings through Music and Movement Activities • Demonstrate Awareness of Music and Movement from Different Cultural Groups
Physical Education	<ul style="list-style-type: none"> • Enjoy Physical Activities • Display Coordination in Motor Tasks • Demonstrate Awareness of Healthy Habits and Safety



WHAT DOES MY CHILD NEED AT PRIMARY 1?

- Learning at Primary 1 should be exciting and fun for your child.
- Some skills that parents can support children in developing are:
 - Relating to others
 - Developing good habits
 - Nurturing positive learning attitudes
 - Encouraging children to learn from their mistakes



Refer to Tip 6 of Parent-Child Activity Book for an activity to encourage children to learn from their mistakes.



SCHOOL – HOME PARTNERSHIP

Help your child succeed in life

Our children do best when schools and parents work hand in hand to support them. Here are some tips to make this happen...

Work with the school to know and support your child

- Have regular conversations with teachers in both academic and non-academic areas – this will help you better guide your child's development.
- Check the teachers' preferred mode of communication – they are not required to share their mobile numbers.
- Understand that teachers may not be able to respond to your queries immediately.

Help your child relate to others

- Work with the teachers to help your child respect differences and resolve disagreements amicably.
- Let the school verify the facts in any incident before taking action to ensure a fair, objective outcome for all parties.

Help your child develop good habits

- Create a conducive home environment for your child to enjoy reading and to finish his/her homework by himself/herself.
- Encourage your child to live a healthy, balanced life with time for sleep and play.

Help your child manage himself/herself

- Guide your child in managing his/her time.
- Encourage your child to help out with household chores.

Our children succeed when parents and schools work hand in hand.

Ministry of Education
SINGAPORE

Our children do best when schools and parents work hand in hand to support them.



PARENT SUPPORT GROUP

Join the Parent Support Group (PSG)!

- The PSG consists dedicated parents who partner the school to support fellow parents in nurturing their children
- It is a platform for parents to network, share, learn and support each other in this parenting journey



A Gracious Community of Confident and Innovative Life-long Learners
Igniting the Joy of Learning, Inspiring all to Care and Share





A Gracious Community of Confident and Innovative Life-long Learners
Igniting the Joy of Learning, Inspiring all to Care and Share

